

J87XJ-LQ134N1 @ 0, 0, 1920x1200 — 2022-07-11 07:48:33

Basic Information

Device:	J87XJ-LQ134N1 @ 0, 0, 1920x1200
Instrument:	i1 DisplayPro, ColorMunki Display — LCD (generic)
Correction:	None
Display profile:	J87XJ-LQ134N1 #1 2022-07-11 07-32 120cdm2 D6500 2.2 F-S XYZLUT+MTX
Display profile luminance:	120.6 cd/m ²
Display profile whitepoint:	xy 0.3126 0.3284 (XYZ 95.18 100 109.32), CCT 6515K
Measured luminance:	120.7 cd/m ²
Measured whitepoint:	xy 0.3126 0.3283 (XYZ 95.22 100 109.37), CCT 6513K
Assumed target whitepoint:	6500K daylight, xy 0.3128 0.3292 (XYZ 95.02 100 108.77)
Measured black luminance:	0.0876 cd/m ²
Contrast:	1378.4:1
Testchart:	verify_extended.ti1
Simulation profile:	None
Gamma mapping:	N/A
Whitepoint simulation:	N/A
Chromatic adaptation:	Bradford
Devicelink profile:	None
Evaluation criteria:	RGB
Date:	2022-07-11 07:48:33

Summary

Criteria	Nominal	Recommended	#	Actual	Result
Measured vs. assumed target whitepoint ΔE^*00	≤ 2	≤ 1		0.65	OK ✓✓
Measured vs. display profile whitepoint ΔE^*00		≤ 1		0.12	
Average ΔE^*00	≤ 1.5	≤ 1		0.37	OK ✓✓
Maximum ΔE^*00	≤ 4	≤ 3	17	1.13	OK ✓✓

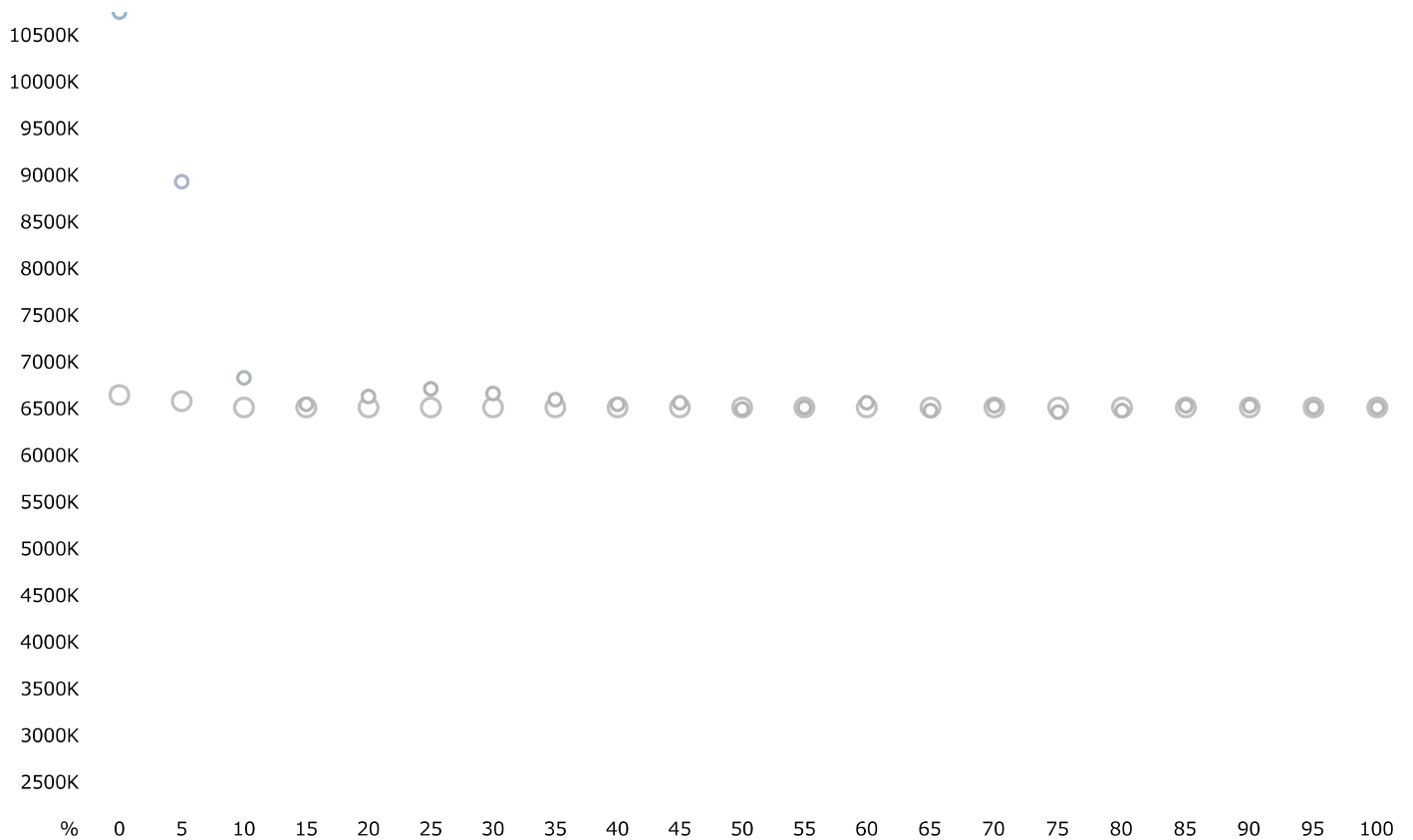
- ✓ Nominal tolerance passed
- ✓ Recommended tolerance passed

Overview

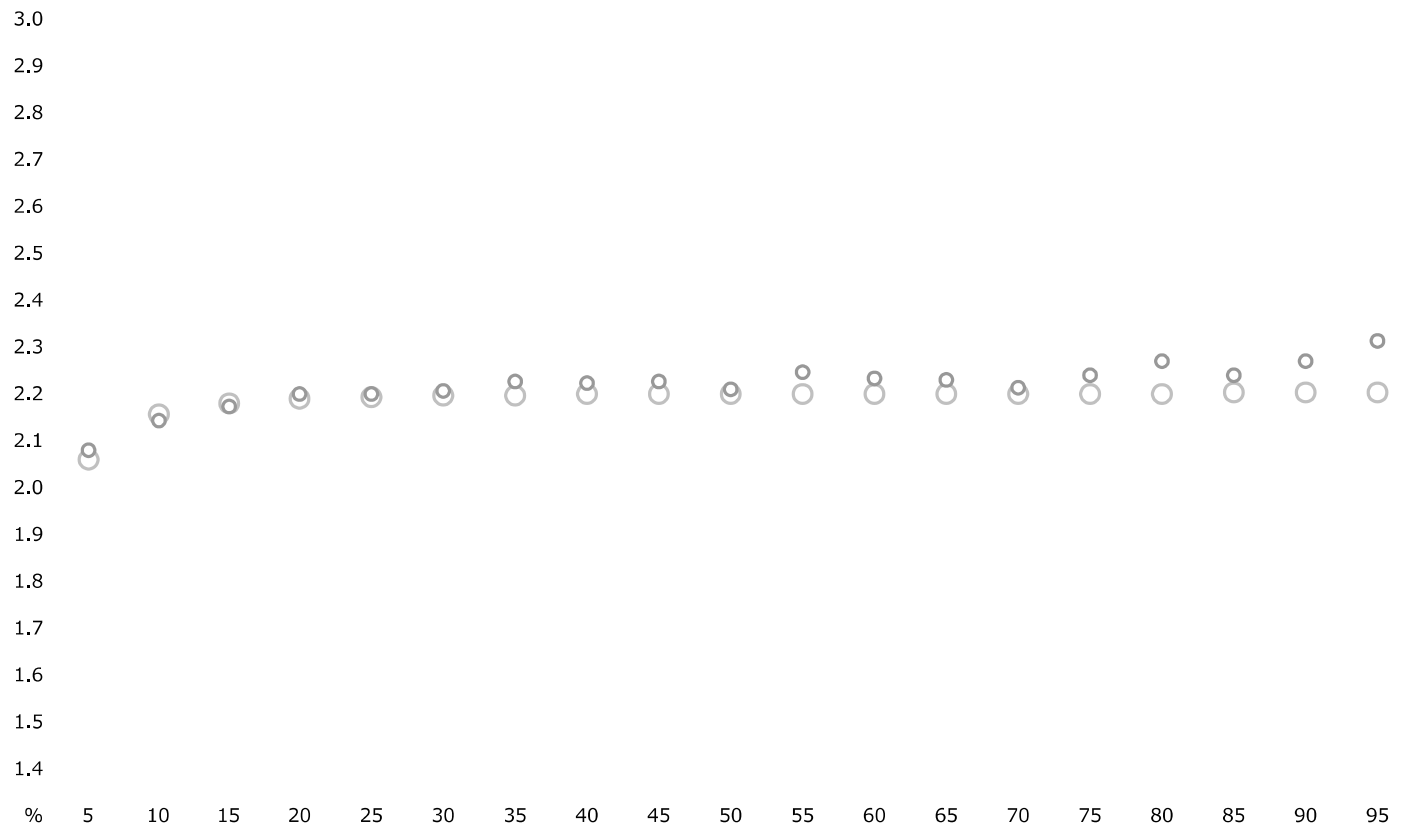
#	Device Values			Nominal Values			Measured Values				Color distance				
	R	G	B	L*	a*	b*	γ	L*	a*	b*	γ	$\Delta L^*_{00/w}$	$\Delta C^*_{00/w}$	$\Delta H^*_{00/w}$	ΔE_{00}
01	255	255	255	100	0	0		100	0	0		0	0	0	0
02	0	0	0	0.66	-0.02	-0.01		0.65	-0.03	-0.82		-0.01	0.78	0.16	0.8
03	13	13	13	1.88	-0.01	-0.02	2.06	1.78	0.11	-0.91	2.08	-0.06	0.88	0.1	0.88
04	26	26	26	6.29	0.02	-0.01	2.16	6.5	-0.61	-0.13	2.14	0.12	0.88	-0.3	0.94
05	38	38	38	13.23	0.03	0	2.18	13.34	-0.07	-0.05	2.17	0.08	0.07	-0.13	0.17
06	51	51	51	19.85	0	-0.01	2.19	19.66	0.49	-0.67	2.2	-0.13	0.96	0.03	0.97
07	64	64	64	26.11	0	0.01	2.19	26	-0.68	-0.29	2.2	-0.08	1.02	0.21	1.04
08	77	77	77	32.06	-0.02	0	2.2	31.87	0.14	-0.72	2.21	-0.15	0.71	0.24	0.76
09	89	89	89	37.76	0	0	2.2	37.2	-0.25	-0.21	2.23	-0.47	0.42	-0.1	0.64
10	102	102	102	43.27	0	0	2.2	42.85	-0.55	0.17	2.22	-0.39	0.82	0	0.91
11	115	115	115	48.6	0	0	2.2	48.15	0.09	-0.34	2.23	-0.45	0.36	0.08	0.58
12	128	128	128	53.78	-0.01	0	2.2	53.6	-0.16	0.23	2.21	-0.18	0.32	-0.05	0.36
13	140	140	140	58.82	0	0	2.2	58.14	0.29	-0.14	2.25	-0.62	0.44	-0.11	0.76
14	153	153	153	63.75	0	0	2.2	63.3	-0.67	0.06	2.23	-0.37	0.98	0.15	1.06
15	166	166	166	68.57	-0.01	0	2.2	68.23	-0.27	0.44	2.23	-0.27	0.58	-0.05	0.64
16	179	179	179	73.29	0	0	2.2	73.15	-0.57	0.27	2.21	-0.1	0.88	0.07	0.88
17	191	191	191	77.92	0	0	2.2	77.58	-0.53	0.81	2.24	-0.24	1.11	-0.03	1.13
18	204	204	204	82.48	0	0	2.2	81.99	-0.05	0.26	2.27	-0.33	0.26	-0.01	0.42
19	217	217	217	86.96	0	0	2.2	86.74	-0.35	0.09	2.24	-0.14	0.52	0	0.54
20	230	230	230	91.37	0	0	2.2	91.11	0.52	-0.42	2.27	-0.16	0.86	0	0.88
21	242	242	242	95.71	0	0	2.2	95.5	-0.33	0.23	2.31	-0.12	0.54	0	0.55

22	128	0	0	26.9	48.68	39.98	26.88	48.65	39.98	-0.01	-0.01	0.01	0.02
23	255	0	0	55.49	81.86	74.73	55.49	81.85	74.72	0.01	0	0	0.01
24	255	128	128	69.52	50.49	25.55	69.51	50.53	25.59	-0.01	0.02	0.01	0.02
25	0	128	0	45.63	-49.21	49.18	45.61	-49.23	49.14	-0.02	0	0.02	0.03
26	0	255	0	86.83	-82.4	83.57	86.81	-82.26	83.5	-0.01	-0.02	-0.01	0.03
27	128	255	128	90	-57.04	49.6	90	-57.07	49.46	0	-0.02	0.05	0.05
28	0	0	128	12.26	36.02	-65.7	12.26	35.94	-65.65	0	-0.02	-0.03	0.03
29	0	0	255	30.96	61.1	-110.84	30.96	61.26	-110.94	0	0.03	0.05	0.05
30	128	128	255	58.92	23.5	-64.6	58.93	23.26	-64.6	0	-0.02	-0.17	0.15
31	0	128	128	47.61	-32.61	-9.3	47.59	-32.6	-9.36	-0.02	0	0.04	0.04
32	0	255	255	90.05	-54.29	-16.22	90.04	-54.15	-16.24	-0.01	-0.03	0.03	0.05
33	170	255	255	94.33	-27.97	-9.21	94.28	-28.28	-9.33	-0.03	0.14	0.01	0.15
34	128	0	128	30.58	54.75	-34.89	30.56	54.76	-34.95	-0.02	0.01	-0.02	0.03
35	255	0	255	61.68	91.87	-58.97	61.68	91.94	-58.99	0	0.01	0.01	0.02
36	255	170	255	81.13	41.06	-28.4	80.98	41.19	-28.67	-0.1	0.08	-0.08	0.16
37	128	128	0	51.94	-8.88	57.77	51.92	-8.93	57.72	-0.02	-0.01	0.03	0.04
38	255	255	0	97.32	-14.32	97.75	97.29	-14.38	97.69	-0.02	-0.01	0.03	0.04
39	255	255	170	98.43	-8.36	41.77	98.41	-8.26	41.55	-0.01	-0.08	-0.03	0.09
40	170	85	85	47.35	36.95	18.49	47.17	36.56	18.6	-0.18	-0.11	0.18	0.27
41	85	170	85	62.53	-42.41	36.28	62.32	-42	36.35	-0.18	-0.08	-0.15	0.24
42	85	85	170	39.48	16.64	-46.89	39.49	16.91	-47.16	0.01	0.11	0.13	0.1
43	85	170	170	64.26	-29.56	-8.36	64.06	-28.85	-8.83	-0.17	-0.25	0.45	0.54
44	170	85	170	49.93	44.59	-29.5	49.8	44.33	-29.99	-0.12	0.02	-0.28	0.31
45	170	170	85	68.38	-8.42	45.17	68.11	-8.61	45.17	-0.22	0.01	0.12	0.25
46	255	0	170	58.07	86.17	-15.25	58.08	86.16	-15.43	0.01	0	-0.06	0.06
47	170	255	0	91.33	-48.46	89.69	91.27	-48.64	89.5	-0.04	-0.01	0.1	0.1
48	0	170	255	65.78	-17.85	-53.86	65.57	-17.27	-54.28	-0.17	0.06	0.32	0.35
49	0	255	170	88.13	-70.07	25.82	88.13	-70.05	25.67	0	-0.02	0.06	0.06
50	170	0	255	47.09	76.58	-83.49	46.94	76.34	-83.82	-0.15	0.01	-0.17	0.23
51	255	170	0	77.17	26.57	84.13	77	26.86	83.93	-0.12	-0.02	-0.19	0.22

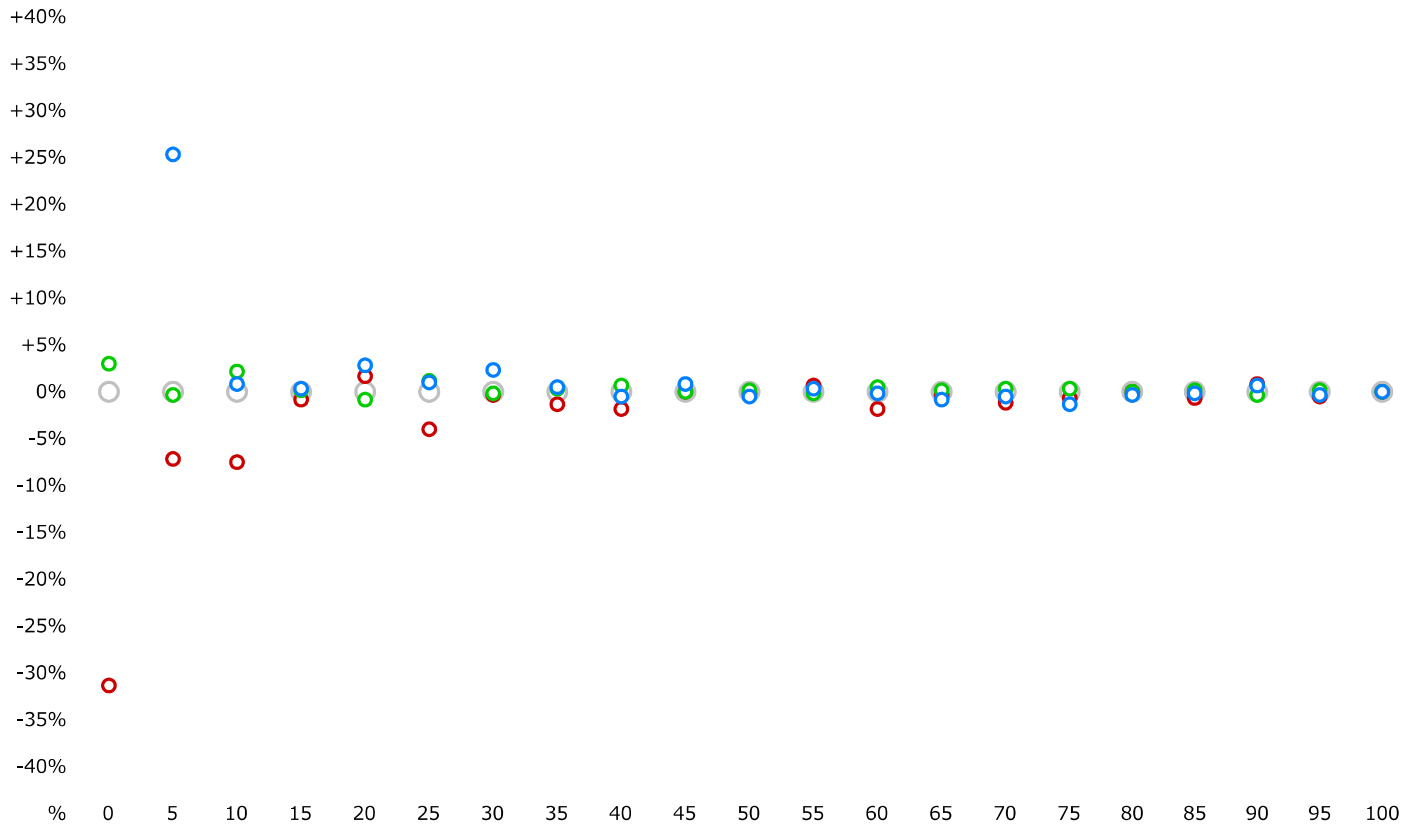
Correlated Color Temperature



Gamma



RGB Gray Balance



Gamut a*b*

