

Measurement Report 3.8.9.3

N156KME-GNA @ 0, 0, 2560x1440 — 2022-06-12 20:41:12

Basic Information

Device:	N156KME-GNA @ 0, 0, 2560x1440
Instrument:	i1 DisplayPro, ColorMunki Display — LCD (generic)
Correction:	None
Display profile:	N156KME-GNA #1 2022-06-12 20-24 120cdm2 D6500 2.2 F-S XYZLUT+MTX
Display profile luminance:	119.3 cd/m ²
Display profile whitepoint:	xy 0.3134 0.3298 (XYZ 95.03 100 108.18), CCT 6459K
Measured luminance:	121.4 cd/m ²
Measured whitepoint:	xy 0.3135 0.3298 (XYZ 95.08 100 108.15), CCT 6452K
Assumed target whitepoint:	6500K daylight, xy 0.3128 0.3292 (XYZ 95.02 100 108.77)
Measured black luminance:	0.139 cd/m ²
Contrast:	873.7:1
Testchart:	verify_extended.ti1
Simulation profile:	None
Gamma mapping:	N/A
Whitepoint simulation:	N/A
Chromatic adaptation:	Bradford
Devicelink profile:	None
Evaluation criteria:	RGB
Date:	2022-06-12 20:41:12

Summary

Criteria	Nominal	Recommended	#	Actual	Result
Measured vs. assumed target whitepoint ΔE^*00	≤ 2	≤ 1		0.41	OK ✓✓
Measured vs. display profile whitepoint ΔE^*00		≤ 1		0.11	
Average ΔE^*00	≤ 1.5	≤ 1		0.14	OK ✓✓
Maximum ΔE^*00	≤ 4	≤ 3	02	0.97	OK ✓✓

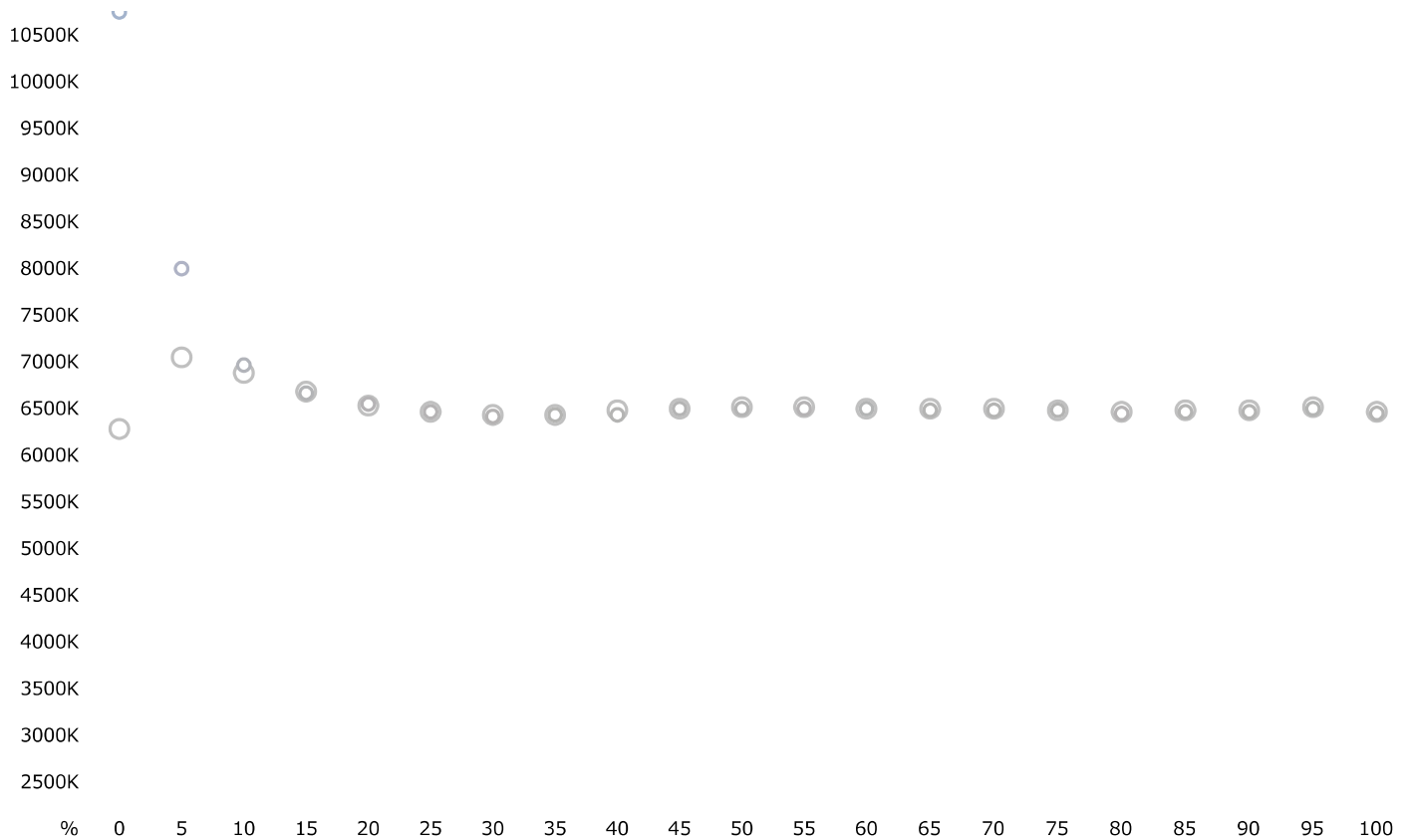
- ✓ Nominal tolerance passed
- ✓ Recommended tolerance passed

Overview

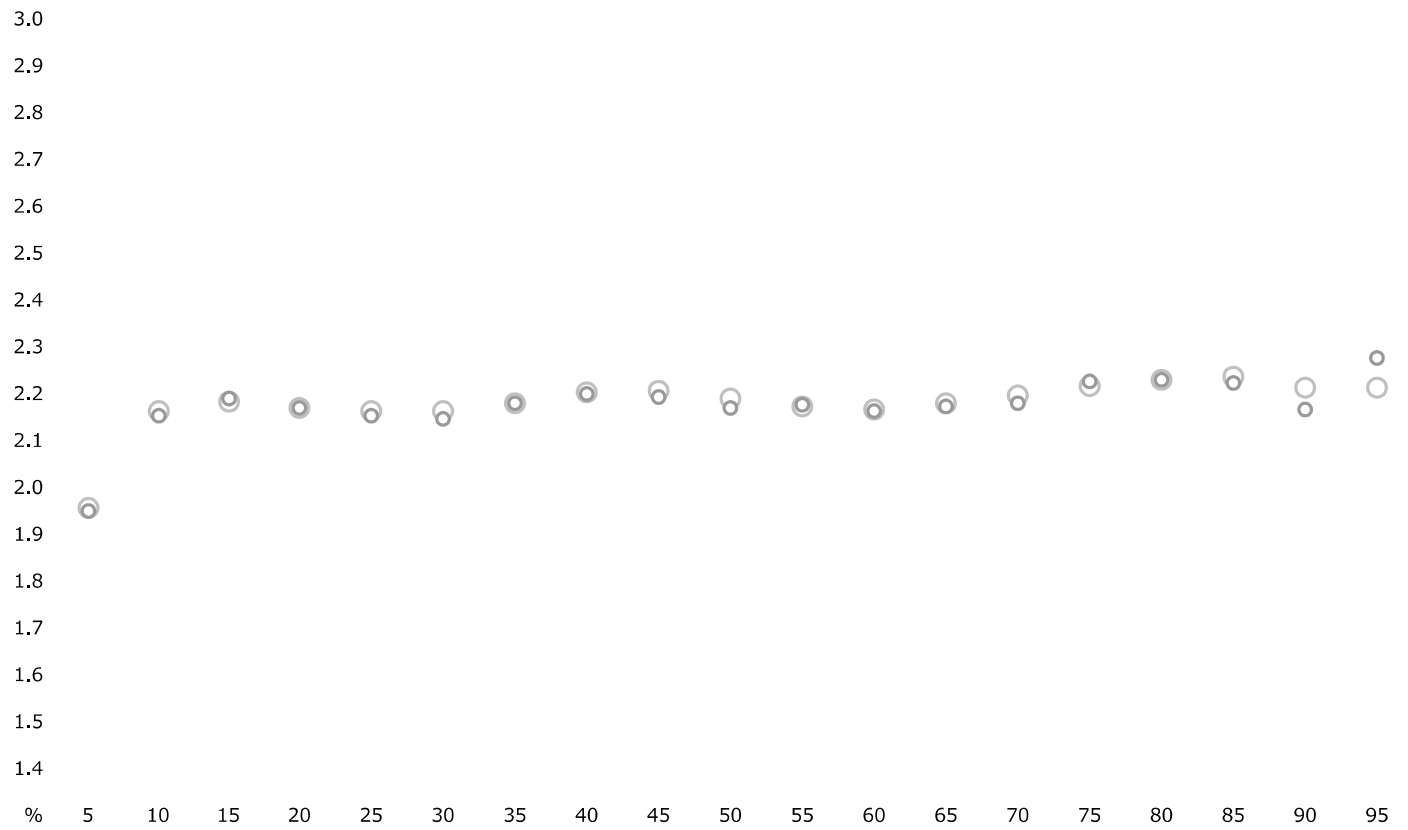
#	Device Values			Nominal Values			Measured Values				Color distance				
	R	G	B	L*	a*	b*	γ	L*	a*	b*	γ	$\Delta L^*_{00/w}$	$\Delta C'_{00/w}$	$\Delta H'_{00/w}$	ΔE_{00}
01	255	255	255	100	0	0		100	0	0		0	0	0	0
02	0	0	0	1.05	0.04	0.02		1.02	0.05	-0.97		-0.01	0.88	-0.4	0.97
03	13	13	13	2.57	0.05	-0.41	1.96	2.61	0.07	-0.94	1.95	0.02	0.52	-0.03	0.52
04	26	26	26	6.19	0.04	-0.69	2.16	6.36	0	-0.82	2.15	0.1	0.13	-0.06	0.17
05	38	38	38	13.14	0.04	-0.59	2.18	13.06	0.07	-0.56	2.19	-0.05	-0.03	0.05	0.08
06	51	51	51	20.18	0.29	-0.44	2.17	20.21	0.32	-0.48	2.17	0.02	0.06	0	0.07
07	64	64	64	26.66	0.36	-0.26	2.16	26.85	0.34	-0.25	2.16	0.14	-0.03	0	0.15
08	77	77	77	32.66	0.18	-0.02	2.16	33	0.15	0.04	2.15	0.27	-0.04	0.06	0.28
09	89	89	89	38.11	-0.01	0.16	2.18	38.09	-0.12	0.19	2.18	-0.01	0.1	0.14	0.17
10	102	102	102	43.17	-0.11	-0.01	2.2	43.26	0.09	0.05	2.2	0.09	-0.03	-0.3	0.32
11	115	115	115	48.49	0.35	-0.42	2.21	48.71	0.04	-0.34	2.19	0.22	-0.32	-0.33	0.51
12	128	128	128	53.94	0.19	-0.51	2.19	54.25	0.08	-0.38	2.17	0.3	-0.18	-0.09	0.36
13	140	140	140	59.21	0.2	-0.49	2.17	59.19	0.49	-0.62	2.18	-0.01	0.37	0.23	0.44
14	153	153	153	64.22	-0.21	-0.19	2.17	64.25	-0.19	-0.26	2.16	0.02	0.01	0.08	0.08
15	166	166	166	68.8	-0.23	-0.18	2.18	68.89	-0.07	-0.18	2.17	0.07	-0.18	0.16	0.25
16	179	179	179	73.34	-0.21	-0.15	2.2	73.53	-0.26	-0.1	2.18	0.14	0.05	-0.08	0.17
17	191	191	191	77.77	0.07	-0.27	2.22	77.7	0.05	-0.23	2.23	-0.05	-0.05	-0.01	0.07
18	204	204	204	82.26	0.28	-0.29	2.23	82.27	0.42	-0.3	2.23	0.01	0.17	0.09	0.19
19	217	217	217	86.76	-0.09	-0.1	2.24	86.83	-0.25	0.04	2.22	0.05	0.2	-0.18	0.27
20	230	230	230	91.33	-0.17	-0.14	2.21	91.5	-0.07	-0.07	2.17	0.11	-0.16	0.02	0.19
21	242	242	242	95.69	-0.8	0.03	2.21	95.57	-0.84	0.09	2.28	-0.07	0.06	-0.05	0.11

22	128	0	0	27.48	53.99	45.12	27.5	54.05	45.18	0.02	0.02	0	0.03
23	255	0	0	56.81	91.67	97.54	56.8	91.68	97.53	-0.01	0	0	0.01
24	255	128	128	70.59	57.27	26.87	70.65	57.04	26.86	0.04	-0.06	0.05	0.09
25	0	128	0	44.73	-59.97	59.41	44.78	-59.96	59.45	0.05	0	-0.01	0.05
26	0	255	0	86.21	-101.72	103.1	86.21	-102.06	103.06	0	0.03	0.07	0.08
27	128	255	128	89.69	-67.57	53.9	89.71	-67.56	53.85	0.01	-0.01	0.01	0.02
28	0	0	128	13.19	37.36	-67.19	13.19	37.46	-67.27	0	0.03	0.04	0.04
29	0	0	255	32.04	64.53	-114	31.99	64.53	-113.93	-0.03	-0.01	0.02	0.04
30	128	128	255	59.99	24.65	-66.61	60	24.71	-66.44	0.01	-0.03	0.09	0.11
31	0	128	128	47.49	-39.92	-10.73	47.53	-40.05	-10.84	0.03	0.05	0.05	0.08
32	0	255	255	89.73	-66.67	-17.62	89.68	-66.86	-17.53	-0.03	0.04	-0.07	0.08
33	170	255	255	94.24	-32.96	-10	94.21	-32.95	-9.91	-0.02	-0.01	-0.06	0.06
34	128	0	128	31.55	60.31	-36.78	31.58	60.42	-36.77	0.03	0.02	0.03	0.04
35	255	0	255	63.03	101.37	-60.66	63.02	101.3	-60.63	-0.01	-0.01	0	0.01
36	255	170	255	82.03	45.61	-29.24	82.08	45.33	-29.05	0.03	-0.1	0	0.11
37	128	128	0	51.79	-9.03	71.78	51.88	-9.07	71.91	0.08	0.03	0.01	0.09
38	255	255	0	97.16	-15.6	122.75	97.16	-15.7	122.75	0	0	0.04	0.04
39	255	255	170	98.41	-8.82	44.22	98.4	-8.86	43.95	0	-0.08	0.06	0.1
40	170	85	85	48.3	41.91	20.18	48.28	41.84	20.25	-0.02	-0.01	0.05	0.06
41	85	170	85	62.4	-49.69	39.91	62.48	-50.17	40.1	0.07	0.13	0.06	0.16
42	85	85	170	40.58	18.34	-49.19	40.58	18.44	-49.27	0	0.04	0.06	0.04
43	85	170	170	64.42	-34.55	-10.14	64.48	-34.63	-10.03	0.05	0.02	-0.08	0.1
44	170	85	170	51.14	49.61	-31.3	51.13	49.68	-31.31	-0.01	0.02	0.02	0.02
45	170	170	85	68.55	-8.95	50.32	68.59	-9.22	50.46	0.03	0.06	0.16	0.17
46	255	0	170	59.48	95.86	-16.48	59.45	95.85	-16.62	-0.03	0	-0.05	0.05
47	170	255	0	90.94	-56.82	111.57	90.92	-57.01	111.52	-0.01	0.01	0.07	0.07
48	0	170	255	65.93	-23.25	-56.8	65.96	-23.41	-56.65	0.03	-0.02	-0.09	0.09
49	0	255	170	87.73	-86.15	27.3	87.71	-86.07	27.19	-0.02	-0.02	0.03	0.04
50	170	0	255	48.28	83.41	-86.1	48.23	83.26	-86.05	-0.05	-0.02	-0.03	0.06
51	255	170	0	77.53	31.97	107.53	77.55	31.88	107.6	0.02	0.01	0.05	0.06

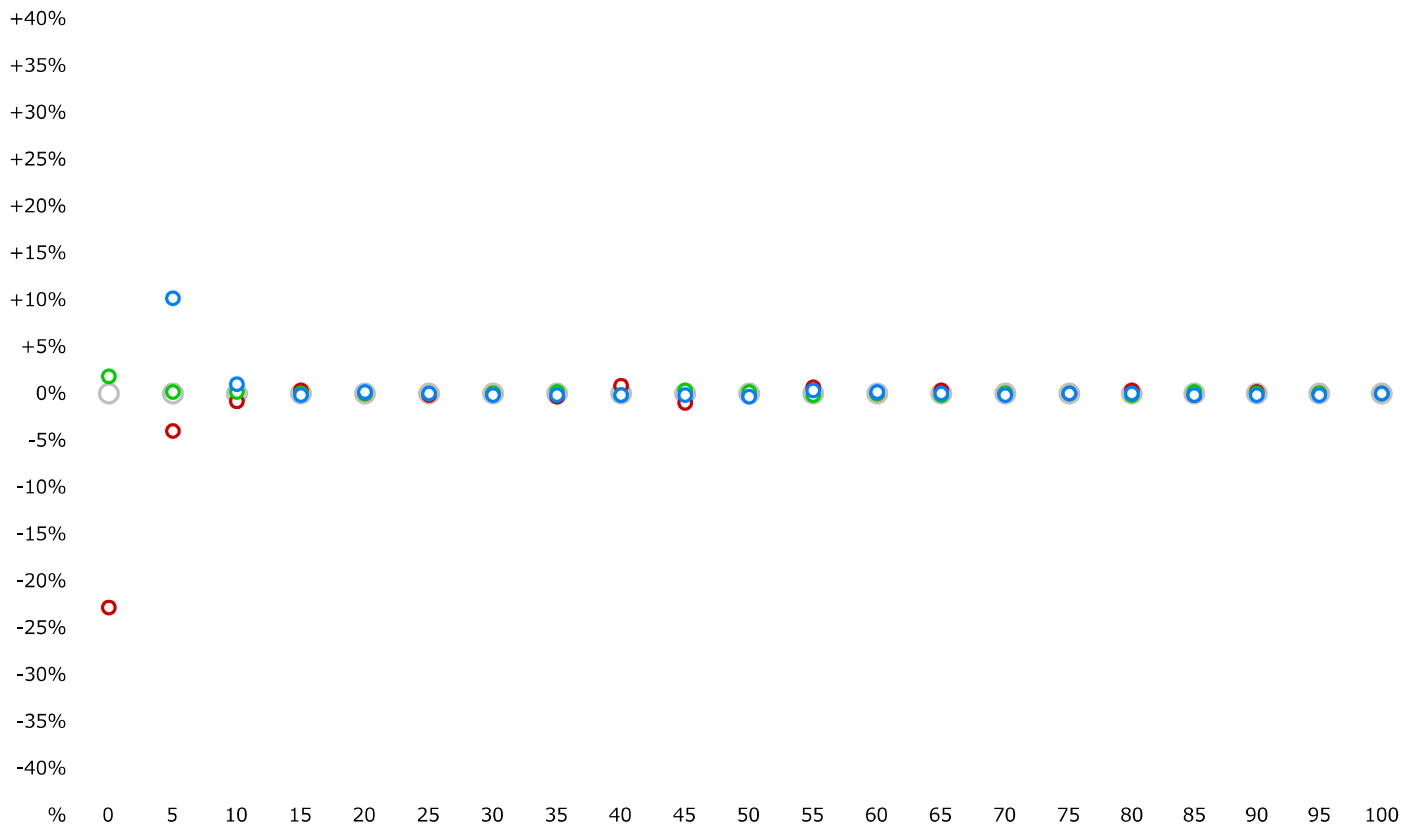
Correlated Color Temperature



Gamma



RGB Gray Balance



Gamut a*b*

