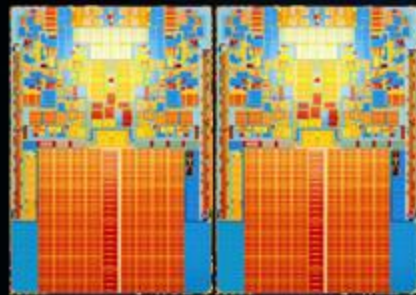


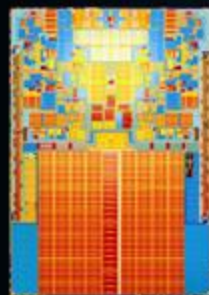
# Silicon Product Margins Microprocessors and Chipsets

Q4'09



Quad Core

+ 9 pts.



Dual Core

Baseline



Silverthorne

- 11 pts.

Note: Product Margin excludes startup costs, excess capacity charges, inventory write-offs and certain period costs such as freight and duty charges

Source: Intel Forecast

