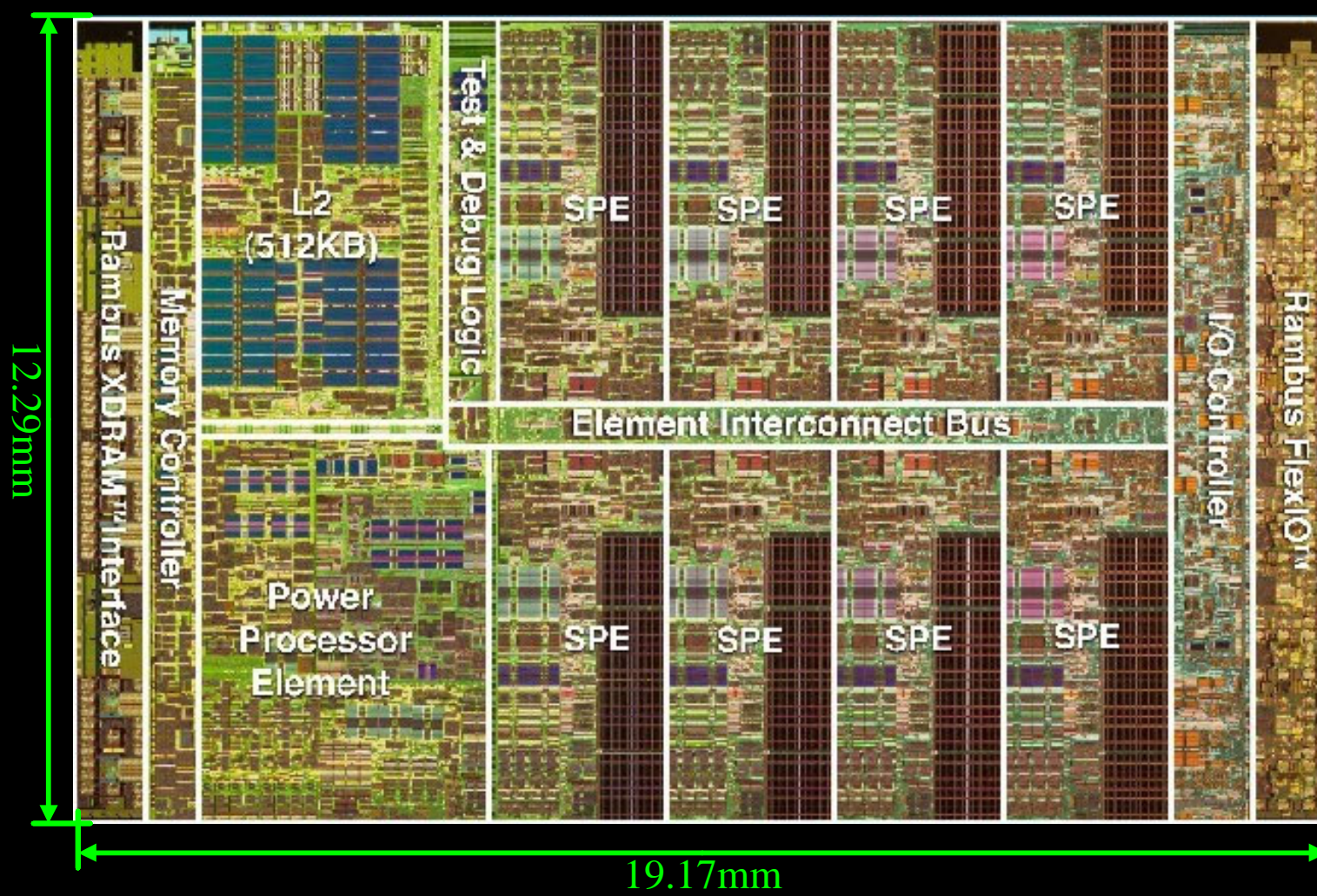


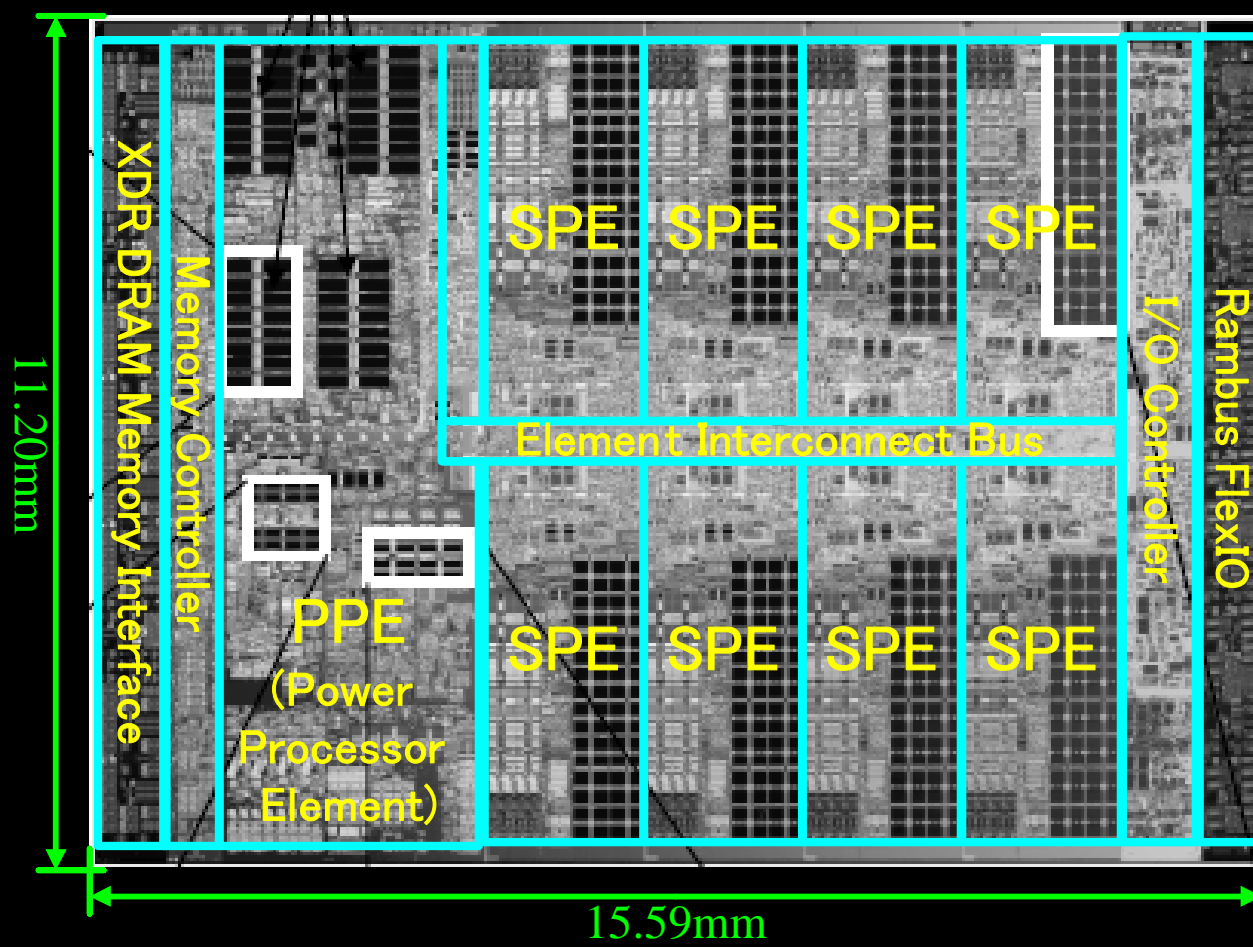
# Cell B.E. 90nm, 65nm, 45nm

## 90nm Cell B.E.



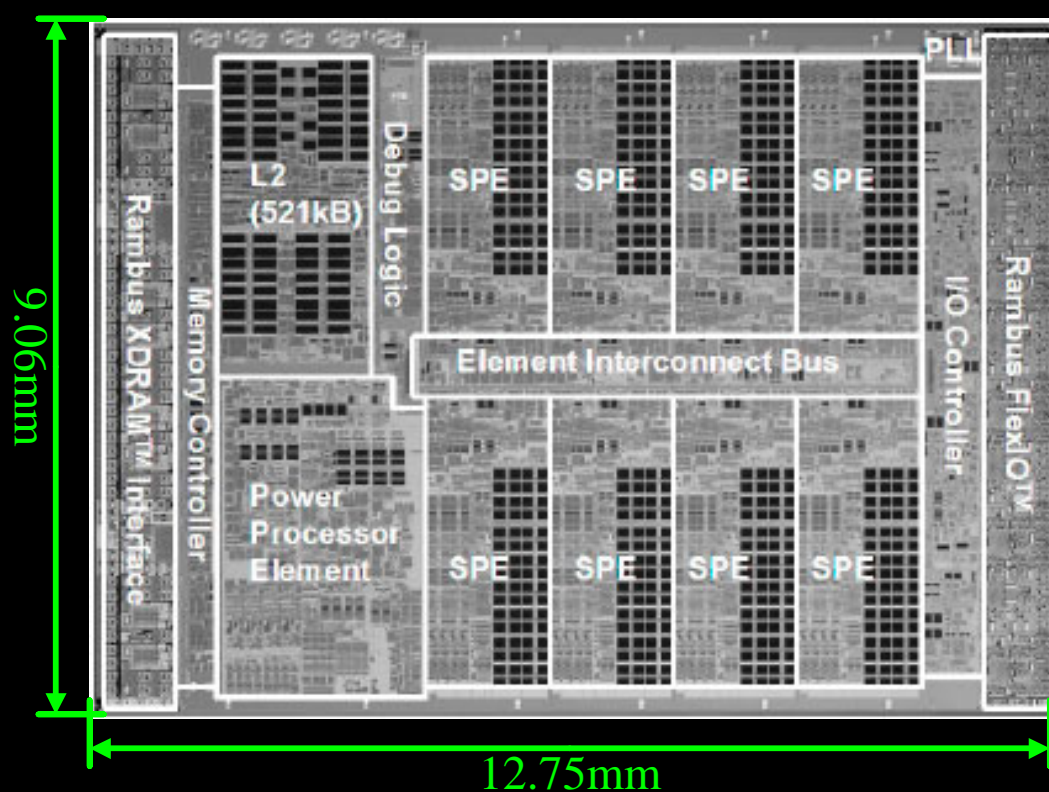
90nm  
 Area 235.48mm<sup>2</sup>  
 100%  
 W 19.17mm  
 H 12.29mm  
 SPE 14.76mm<sup>2</sup>  
 PPE 26.86mm<sup>2</sup>

## 65nm Cell B.E.



65nm  
 Area 174.61mm<sup>2</sup>  
 74.2%  
 W 15.59mm  
 H 11.20mm  
 SPE 11.08mm<sup>2</sup>  
 PPE 19.60mm<sup>2</sup>

## 45nm Cell B.E.



45nm  
 Area 115.46mm<sup>2</sup>  
 49%  
 W 12.75mm  
 H 9.06mm  
 SPE 6.47mm<sup>2</sup>  
 PPE 11.32mm<sup>2</sup>