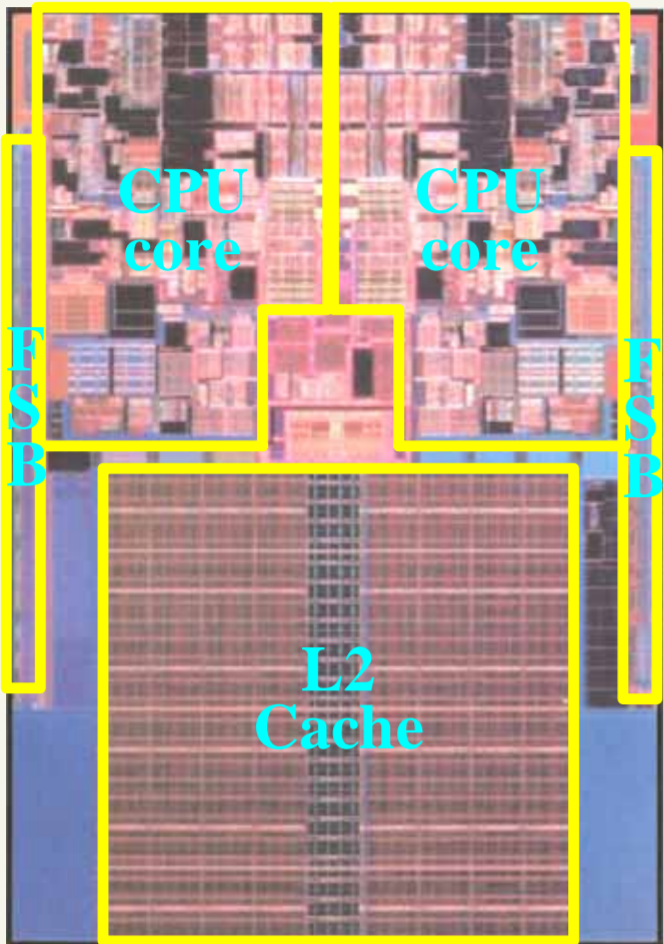


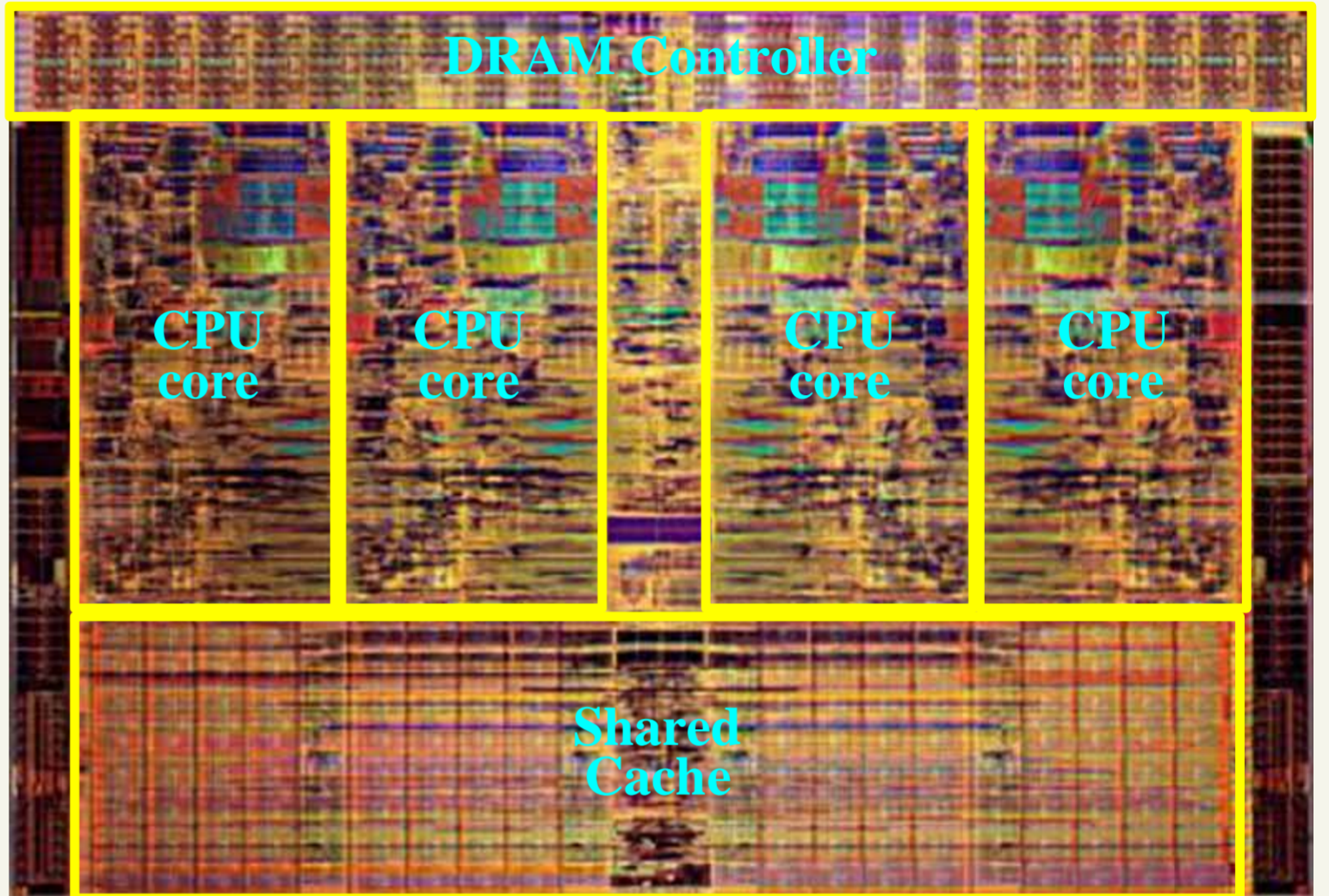
Penryn and Nehalem

Penryn-6M (Dual-core)



2.5x

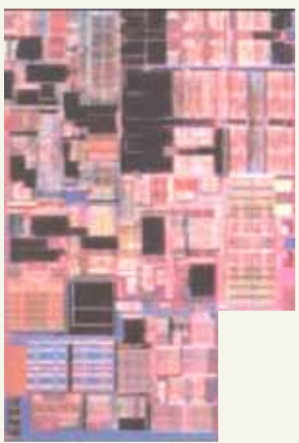
Nehalem-Quad-core



2 CPU cores
45nm Process
107mm²?
410M transistors
6MB L2 Cache

4 CPU cores
45nm Process
<270mm²?
731M transistors
8MB Cache

Penryn CPU core



>19M transistors

Nehalem CPU core



<30M? transistors

1.4-1.5x