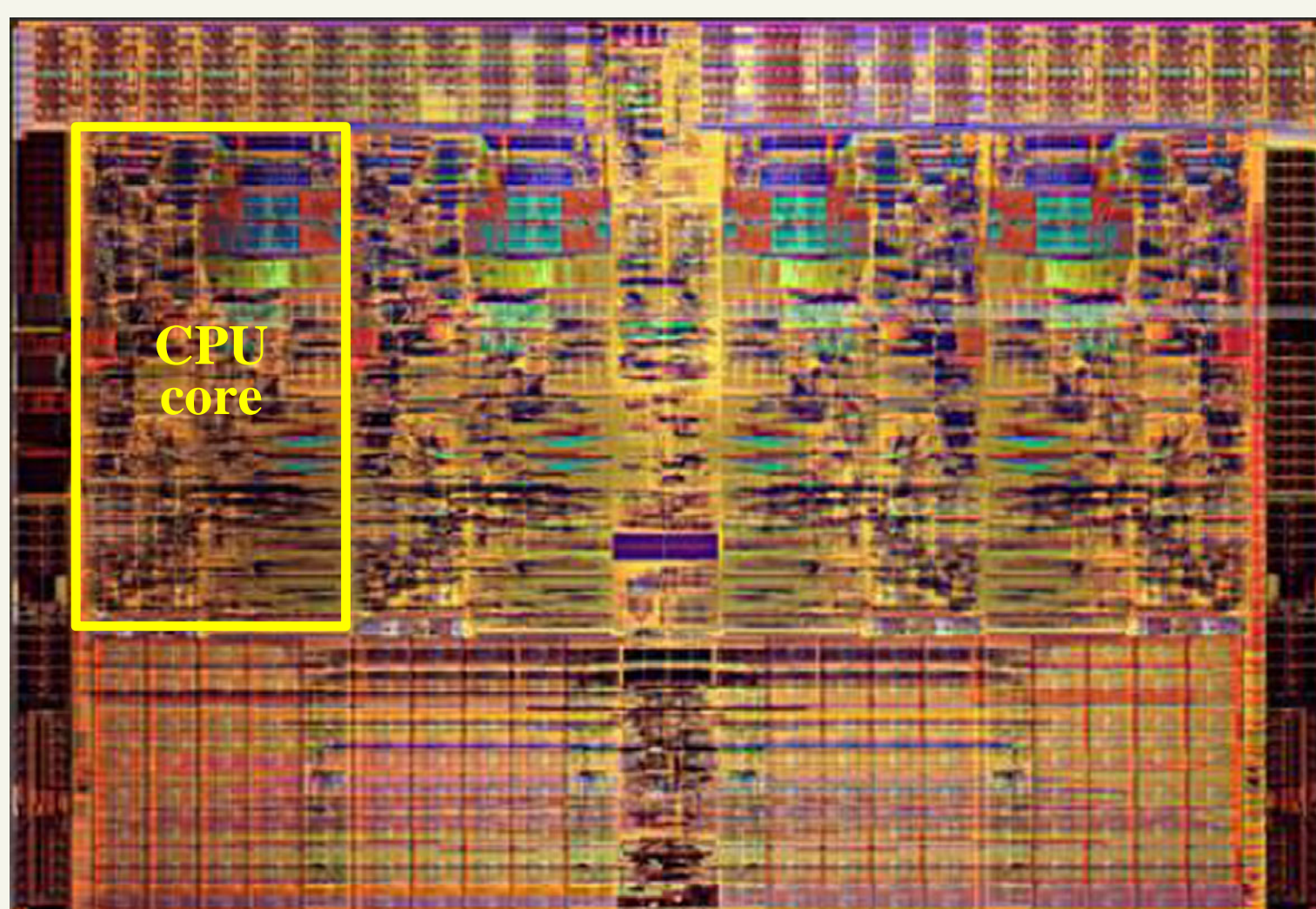


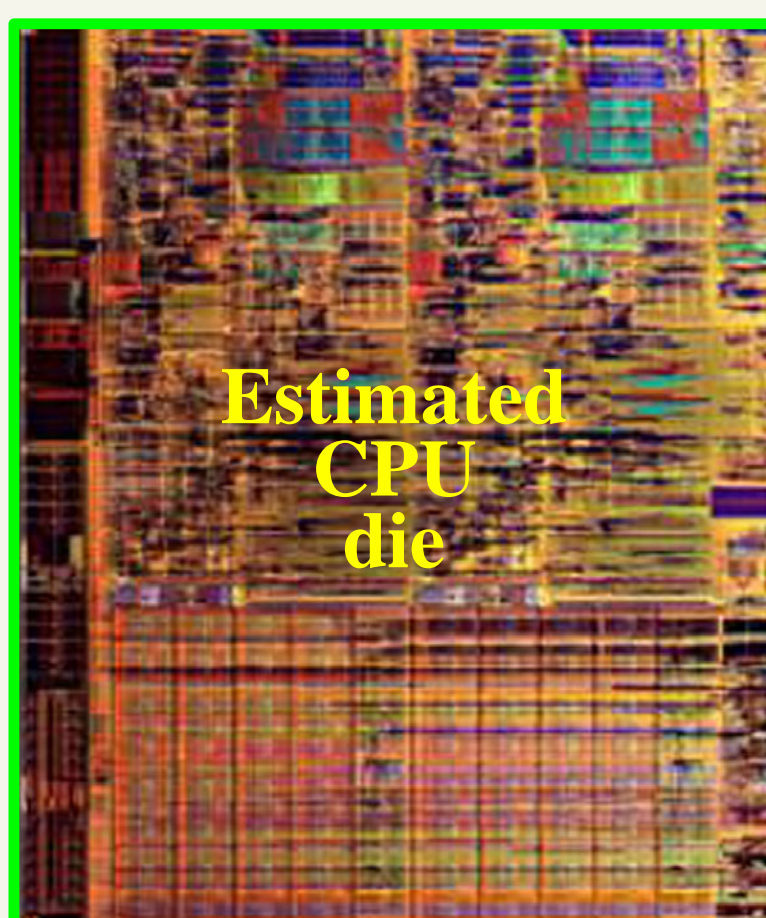
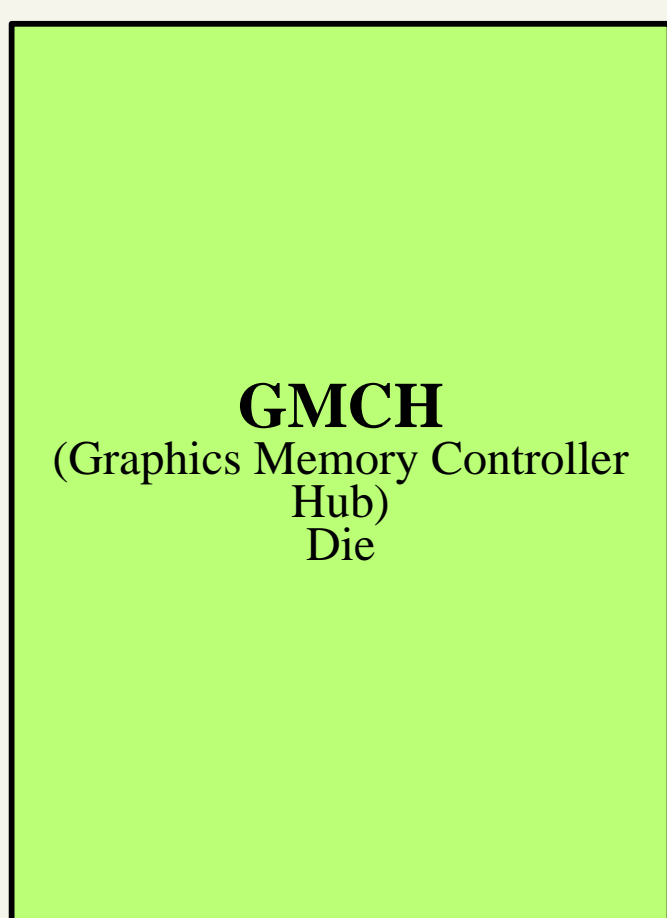
推定されるNehalemファミリのダイ

Nehalem Quad-core



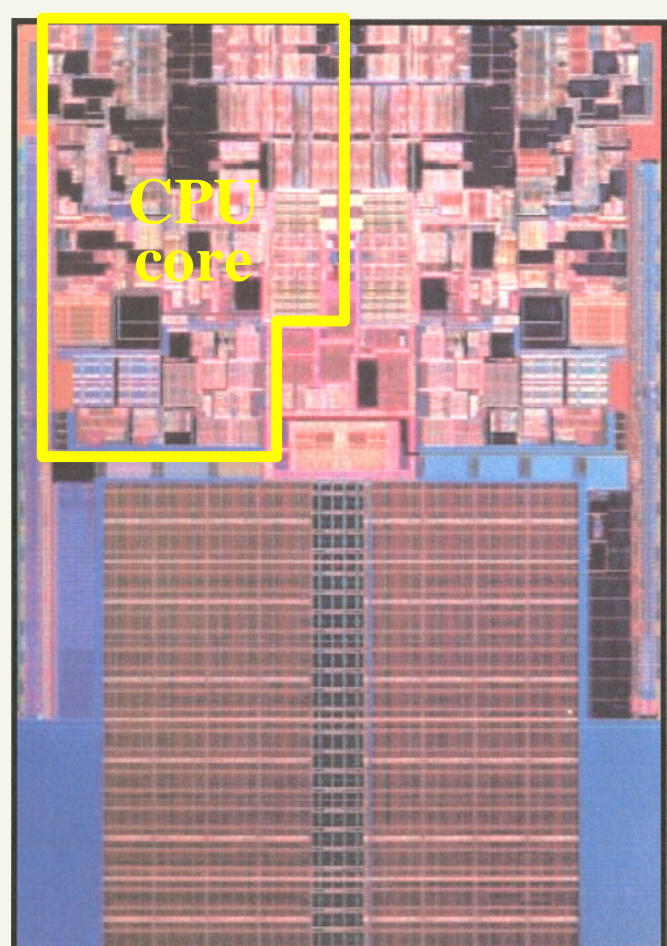
4 CPU cores
45nm Process
<270mm²?
731M transistors
8MB Cache

Nehalem Dual-core with Graphics



2CPU cores
45nm Process
>120mm²? (CPU Die)
?M transistors
4MB Cache

Penryn-6M (Dual-core)



2 CPU cores
45nm Process
107mm²?
410M transistors
6MB L2 Cache