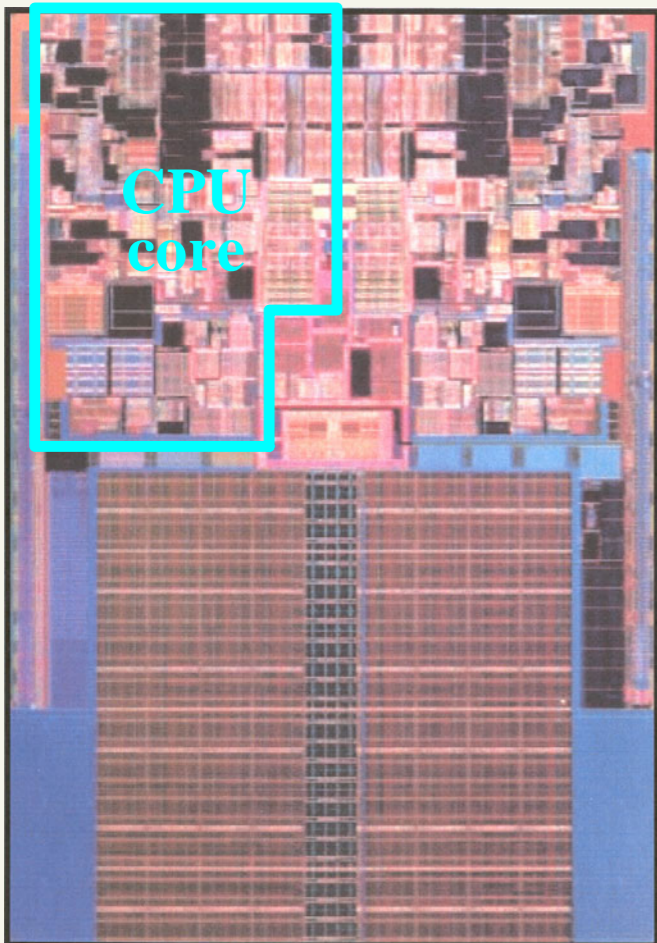


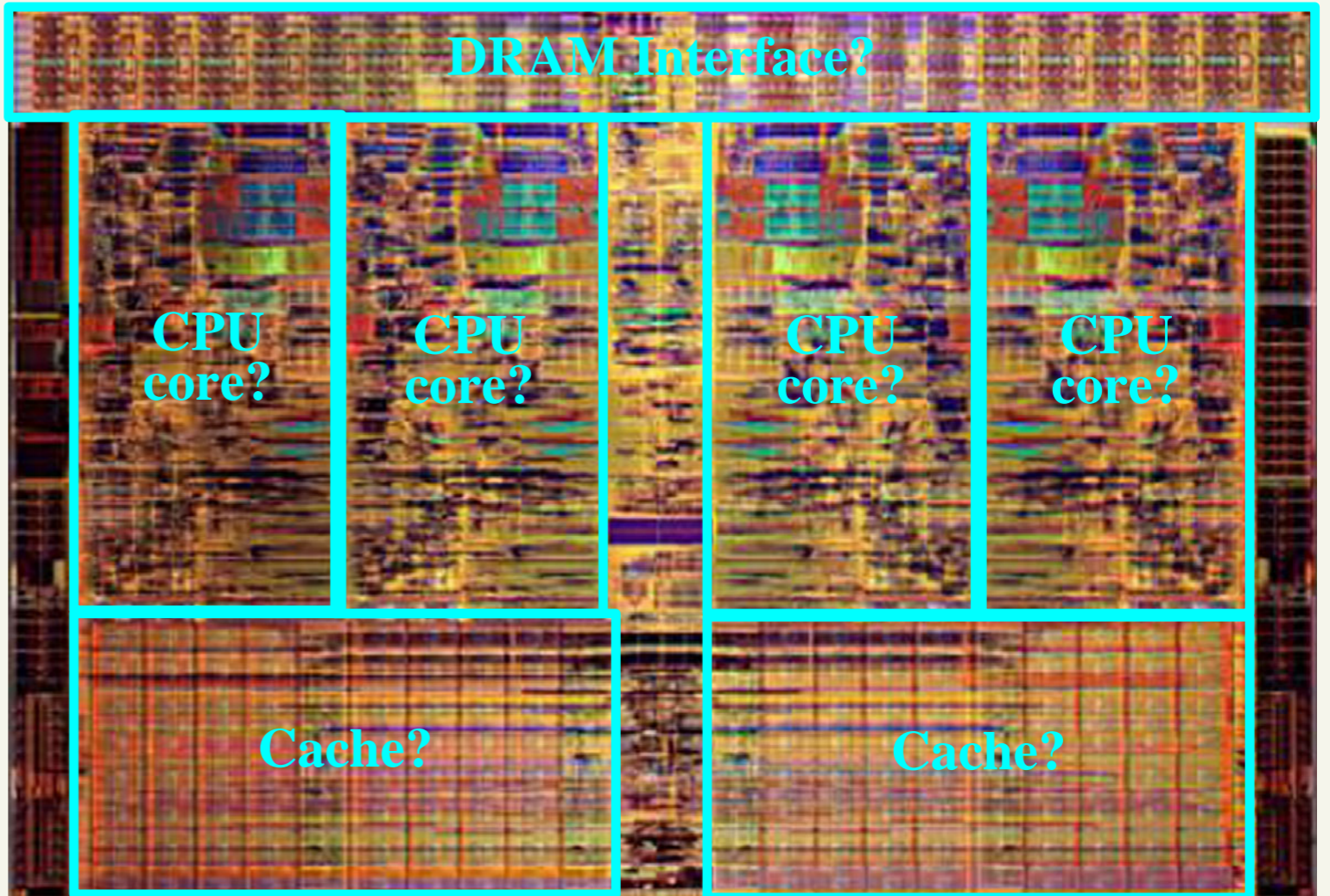
# Penryn and Nehalem

Penryn-6M (Dual-core)



2.5x

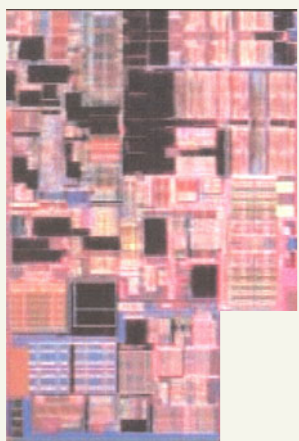
Nehalem-Quad-core



2 CPU cores  
45nm Process  
107mm<sup>2</sup>?  
410M transistors  
6MB L2 Cache

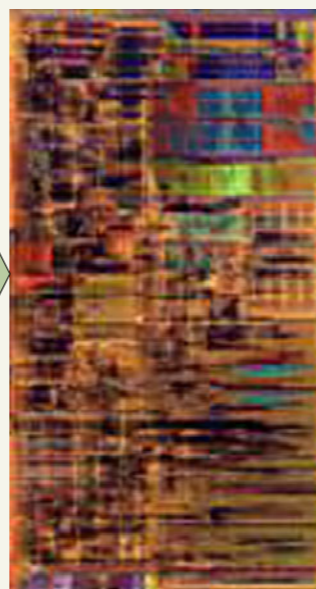
4 CPU cores  
45nm Process  
270mm<sup>2</sup>?  
731M transistors  
8MB Cache

Penryn CPU core



1.5x

Nehalem CPU core



>19M transistors

30M? transistors