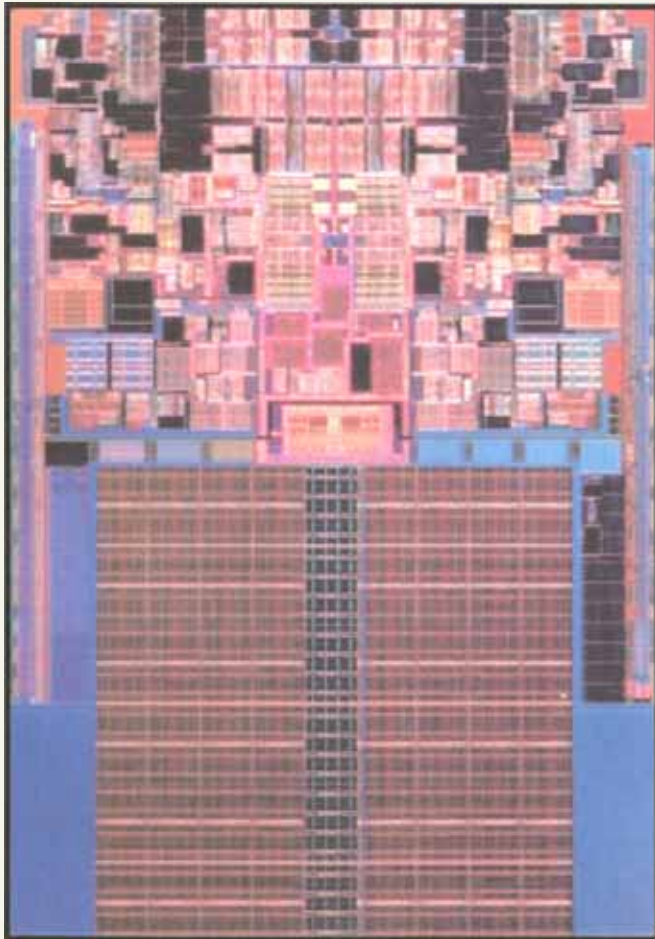


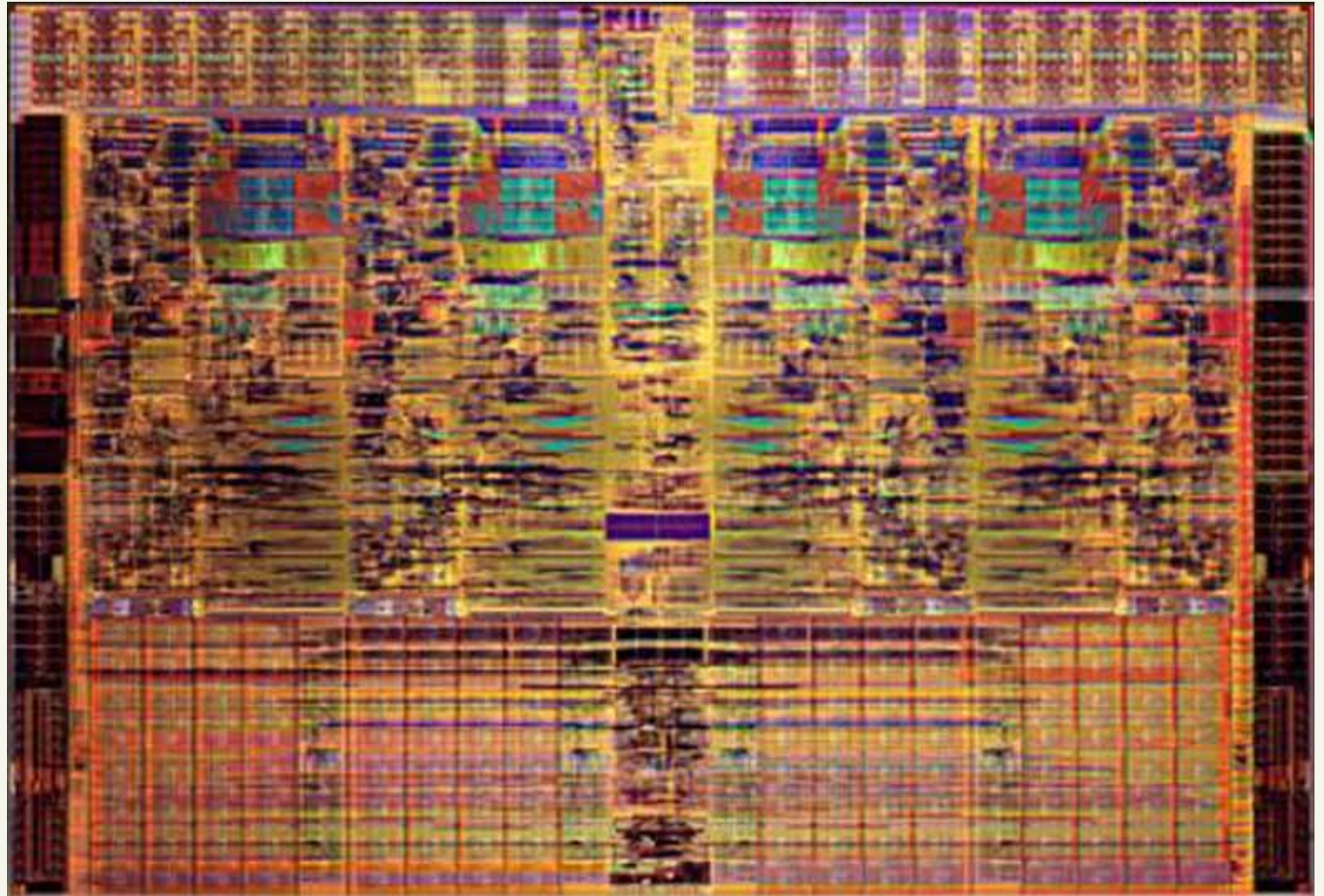
Penryn and Nehalem

Penryn-6M (Dual-core)



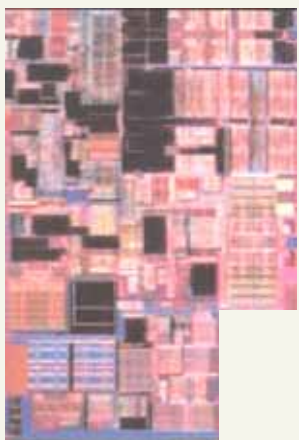
2 CPU cores
45nm Process
103mm²?
410M transistors
6MB L2 Cache

Nehalem-Quad-core



4 CPU cores
45nm Process
270mm²?
731M transistors
8MB Cache

Penryn CPU core



Nehalem CPU core



1.5x