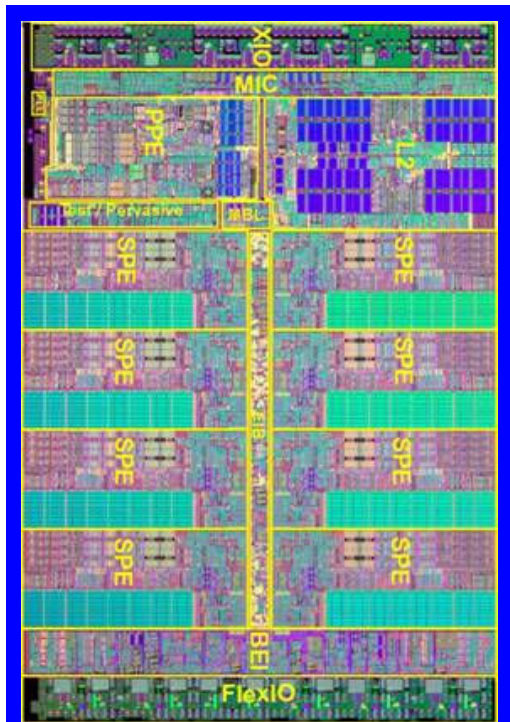


“Scale-out” at the Chip Level

- IBM’s **Partnership** with Sony & Toshiba has yielded a revolutionary chip architecture known as **Cell**



- 234M Transistors
- 64 Bit Power Processor
- 8 Synergistic Processor Elements
- 256 Billion Floating Point Operations per second (S.P.)



Investment in Capital + aggregation of Intellectual Capital that will drive future progress